



Introduction

The [Broadband for Education \(BB4E\) Team](#) encourages Public Schools and Libraries to use this report and related resources when planning broadband upgrades or service renewals this year. The following information is intended to help you:

- ☆ Consider Statewide Price Agreement (SPA) options designed for the competitive mini-quote process
- ☆ Identify and contact local Internet Service Providers (ISPs) to request quotes
- ☆ Use price transparency when planning an upgrade and preparing for price negotiations
- ☆ Utilize [BB4E online resources](#) via hyperlinks
 - Query the NM Broadband Map for newly reported ISP and other data (<https://nmbbmapping.org/mapping/>)
 - Request a free Mini-Quote System account for the E-rate competitive bidding process (<http://www.broadband4education.nm.gov/request-mini-quote-account.aspx>)
 - Download this report for one or more District locations (<http://www.broadband4education.nm.gov/broadband-info-sheets.aspx>)
 - View E-rate Category 1 SPA guidelines to add or change new or existing eligible service locations (<http://www.broadband4education.nm.gov/statewide-price-agreements-for-internet-access-services.aspx>)
 - Review how State Master Contracts, also known as SPAs, work (<http://usac.org/sl/applicants/step02/state-master-contracts.aspx>)
 - View E-rate Category 2 SPA guidelines (<http://www.broadband4education.nm.gov/state-price-agreements-for-cat2-purchases.aspx>)
- ☆ Assess whether or not your educational facility is digital learning ready (<https://futureready.org/>)

E-rate Category 1 (Internet Access Service) State Price Agreement (SPA) Options

Below you will find the original *monthly quotes* for Internet access services by hub location (*not to exceed amounts*) under RFP # 70-000-16-00013 for Educational Institutions and Libraries. This master contract is associated with E-rate **State Form 470 # 170046897**. If you notice an error, wish to request a quote, and/or need to add or change a service location, **please contact the awarded Provider directly.**

Quote Type Definitions

- ON-NET:** The Primary Contractor will be proposing a direct connection to On-Net Internet Access Services, which is *in the Primary Contractor's service area*. This excludes any fiber construction services and/or special construction.
- **OFF-NET:** The Primary Contractor will be proposing a direction connection to Off-Net Internet Access Services, which is *outside of the Primary Contractor's service area*. This may include fiber construction services and/or special construction, and to meet the applicant's need, this may include the Offeror partnering with other providers.

2017 E-rate Costs

Your District's monthly cost per 100 Mbps: \$7,644

2017 Bandwidth per Month

Your District is paying for this amount of bandwidth per month: 200 Mbps

2017 District Bandwidth per Student

527.7 kbps

2017 District Technology Type

Fiber and Other Copperwire

SPA Quotes by Address

**A double asterisk represents "OFF-NET" services as described above.

1. Chama Elementary School, 182 Pine Ave, Chama, NM 87520

Provider Name	Monthly Not to Exceed Amounts by Bandwidth									
	100 Mbps	200 Mbps	500 Mbps	1 Gbps	2 Gbps	5 Gbps	10 Gbps	25 Gbps	50 Gbps	100 Gbps
**Windstream	\$9,306	\$9,726	\$11,406	\$13,525						

2. Escalante Jr Sr High School, P.O. Box 157, Los Ojos, NM 87551

Provider Name	Monthly Not to Exceed Amounts by Bandwidth									
	100 Mbps	200 Mbps	500 Mbps	1 Gbps	2 Gbps	5 Gbps	10 Gbps	25 Gbps	50 Gbps	100 Gbps
**Windstream	\$4,260	\$4,681	\$6,360	\$8,381						

Internet Service Providers (ISPs) in Your Area

** A double asterisk below represents ISPs with an *active New Mexico Statewide Price Agreement (SPA)* for Internet access services. You may have an option to be added to one or more of these agreements which are intended to help control costs. *Please do not hesitate to contact any or all of these Providers for a quote.*

For the most current contact information, please use the following website links.

1. AT&T (<http://www.att.com/>)
 - o Mobile Wireless
2. Choice Wireless (<https://us.choice-wireless.com/>)
 - o Mobile Wireless
3. GCI Communication, Corp. (<https://www.gci.com/>)
 - o Satellite
4. Hughes Net (<http://www.hughesnet.com/>)
 - o Satellite
5. Skycasters (<http://www.skycasters.com/>)
 - o Satellite
6. T-Mobile (<http://www.t-mobile.com/>)
 - o Mobile Wireless
7. Verizon Wireless (<http://www.verizonwireless.com/b2c/index.html>)
 - o Mobile Wireless
8. ViaSat Inc. (<http://www.viasat.com/>)
 - o Satellite
9. **Windstream (<https://www.windstream.com/>)
 - o DSL, Fiber

Questions?

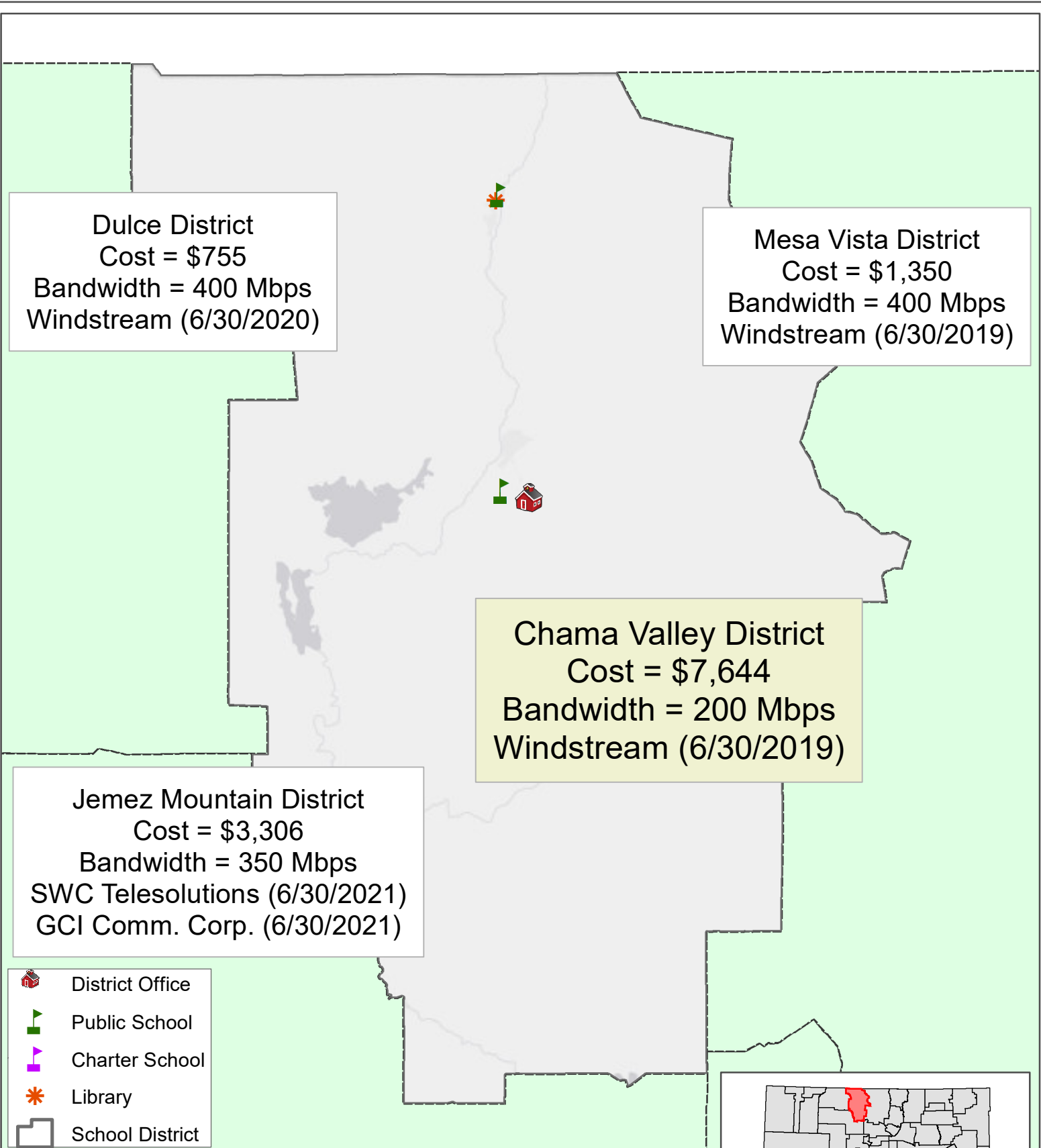
Please contact John Chadwick, State E-rate Coordinator, at the [New Mexico Public Education Department \(PED\)](#) via phone (505-827-6491) or email (John.Chadwick@state.nm.us).

BB4E Contacts Webpage: <http://www.broadband4education.nm.gov/contact-us.aspx>

Data Sources

The data for this report exists mostly through self-reporting mechanisms and may be somewhat outdated or incorrect, despite our best efforts to ensure accuracy.

- ◆ 2017 E-rate Data from the Universal Service Administrative Company (USAC)
- ◆ ISP Data from the Federal Communications Commission (FCC)
- ◆ E-rate Data from the NM Public Education Department (PED)
- ◆ 2017 E-rate Data Validated By EducationSuperHighway (ESH)
- ◆ Mapping Data from the NM Broadband Map; NM Department of Information Technology (DoIT) Office of Broadband & Geospatial Initiatives (OBGI)
- ◆ SPA Data from the NM State Purchasing Division (SPD), General Services Department (GSD)



District Internet Access Service Monthly Cost Comparison
Chama Valley Independent Schools

- 2017 E-Rate monthly cost per 100 Mbps per District
- Total Bandwidth per Month per School District
- Internet Service Provider (Contract Expiration Date)

