



State E-rate Coordinator

The NMPED is a dedicated BB4E Program Partner to ensure that all NM Public Schools/Districts and Charters have access to high-speed Internet connectivity and the educational opportunities it affords.

NMPED has an experienced E-Rate Coordinator on staff to help Schools/Districts navigate through the often changing and complicated application and consortia processes. For related questions or help with NMPED's free Mini-Quote System, please contact:

John Chadwick
John.Chadwick@state.nm.us
(505) 827-6491

E-rate Application Support for Fiber Projects

In collaboration with NMPED, E-rate Central provides guidance, training, and other resources in support of federal E-rate funding for NM Public Schools/Districts.

Please contact E-rate Central directly if you wish to know the status of your **fiber project application** at the Universal Service Administration Company (USAC) or if you have a new fiber project needing E-rate funding.

For fiber project application assistance/questions:

Andrew Eisley
aeisley@e-ratecentral.com
(516) 801-7821

E-rate Compliant State Price Agreements

If it's time to renew your Internet access services and/or upgrade your internal network, please be sure to review the following State Price Agreements for potential cost savings.

Category (CAT) 1 Agreements (For Internet Access Services)

Please visit this webpage for details:
<http://www.broadband4education.nm.gov/statewide-price-agreements-for-internet-access-services.aspx>

Category (CAT) 2 Agreements (For Internal Networking Equipment & Basic Services)

Please visit this webpage for details:
<http://www.broadband4education.nm.gov/state-price-agreements-for-cat2-purchases.aspx>

Procurement (NMPED) Contact:

Matthew Goodlaw
Matthew.Goodlaw@state.nm.us

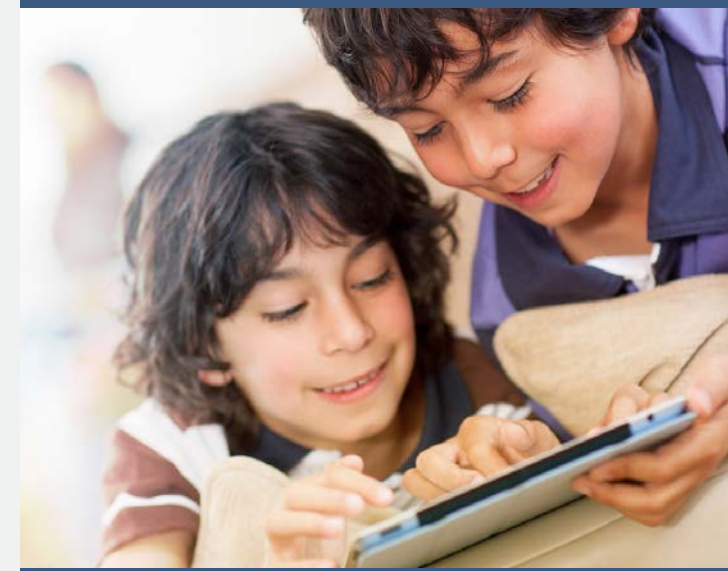
State BB4E Program

The NM Public Education Department (NMPED) and the NM Department of Information Technology (DoIT) Office of Broadband & Geospatial Initiatives (OBGI) created a **permanent BB4E Program** in 2016 to ensure that the State continues to support the broadband needs of K-12 educational institutions well beyond the BB4E founding administration. If you have any questions regarding this program, please contact (DoIT OBGI):

Kendra L. Karp
KendraL.Karp@state.nm.us
(505) 827-0214



Governor's Broadband for Education Initiative



Digital Learning Readiness for NM Public Schools

Visit Us Online:

<http://www.broadband4education.nm.gov/>

Broadband for Education (BB4E) Goals

In October 2015, **Governor Susana Martinez** announced the BB4E initiative to bring high-speed Internet access to every classroom by the 2018 school year. Specific goals are outlined below.



GOALS

- Increase broadband accessibility (Bandwidth **scalable to** 1 mbps per student)
- Make broadband affordable through Procurement Optimization
- Leverage federal, state, and local funding for upgrades and fiber
- Invest resources today for the future



AFFORDABILITY

In many cases, the cost of services to access the Internet have become prohibitive for NM Public Schools. To address this issue, the State of New Mexico is currently pursuing a **Procurement Optimization Strategy** in order to lower costs through the use of State Price Agreements.



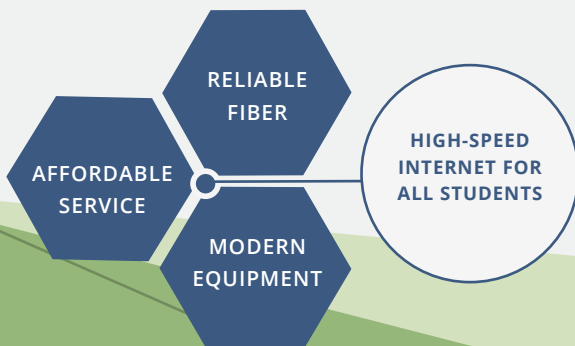
FIBER INFRASTRUCTURE

Target fiber connections for high-speed Internet access



WI-FI

Optimize and upgrade equipment for Wi-Fi and Local Area Network (LAN) connectivity



To view BB4E's progress thus far, please visit: <http://www.broadband4education.nm.gov/transparency.aspx>



Free Upgrade Support

Regardless of whether or not your School/District already has an upgrade plan, the EducationSuperHighway (ESH) **NM Upgrade Team** is here to assist you in achieving the **scalable to** 1 mbps per student goal as well as Wi-Fi in every classroom. These services are entirely free and come with many benefits that support developing a less cumbersome and most cost effective upgrade. Naturally, ESH support is flexible to the needs of local School/District IT Departments.

Typical outreach schedule:



EARLY FALL

Getting Started



LATE FALL

Research your options



WINTER

Develop your upgrade strategy



WINTER/SPRING

Bid & Purchasing Support

Please contact ESH today for a free consultation.

Christine Yoo

christine.yoo@educationsuperhighway.org
(415) 967-7430

Free Webinars

Topics: Category (CAT) 1 Evaluations, CAT 2 Planning, Procurement, E-rate Filing, Price Transparency, Mini-Quote System, and State Price Agreements

Upcoming Webinars:

<http://www.broadband4education.nm.gov/webinars.aspx>

More Free Resources

Please visit the Governor's BB4E website at <http://www.broadband4education.nm.gov> to access a variety of tools and resources that support School/District and Library broadband upgrade planning, shopping, negotiating, and E-rate compliance.

- Use an Internet service upgrade **checkoff list** to ensure you don't forget anything important
- See what neighboring Districts pay for the same amount of bandwidth and which providers they use
- Use **price transparency** to negotiate cost
- Identify current Internet service providers (ISP) servicing your area and contact them for quotes
- Leverage E-rate compliant and technically sound CAT1 & CAT2 **State Price Agreements** for possible cost savings
- Use the free **Mini-Quote System** to encourage a more competitive bidding environment among State Price Agreement holders
- Determine if your location is in or near a rural ISP area awarded **Connect America Funds (CAF)** or **Public Regulation Commission (PRC) Broadband Funds**

Apply For E-rate State Matching Funds

The Public School Capital Outlay Council (PSCOC) may currently expend up to \$10 million annually to correct deficiencies in broadband infrastructure affecting Public Schools statewide. They are currently accepting applications for State matching funds associated with E-rated broadband upgrades. For more details, please contact the NM Public School Facilities Authority (PSFA) Broadband Deficiencies Correction Program (BDPC) Manager below.

Ovidiu Viorica

oviorica@nmfsfa.org
(505) 843-6272